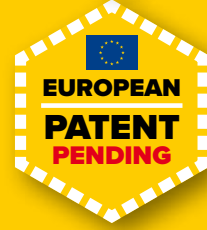
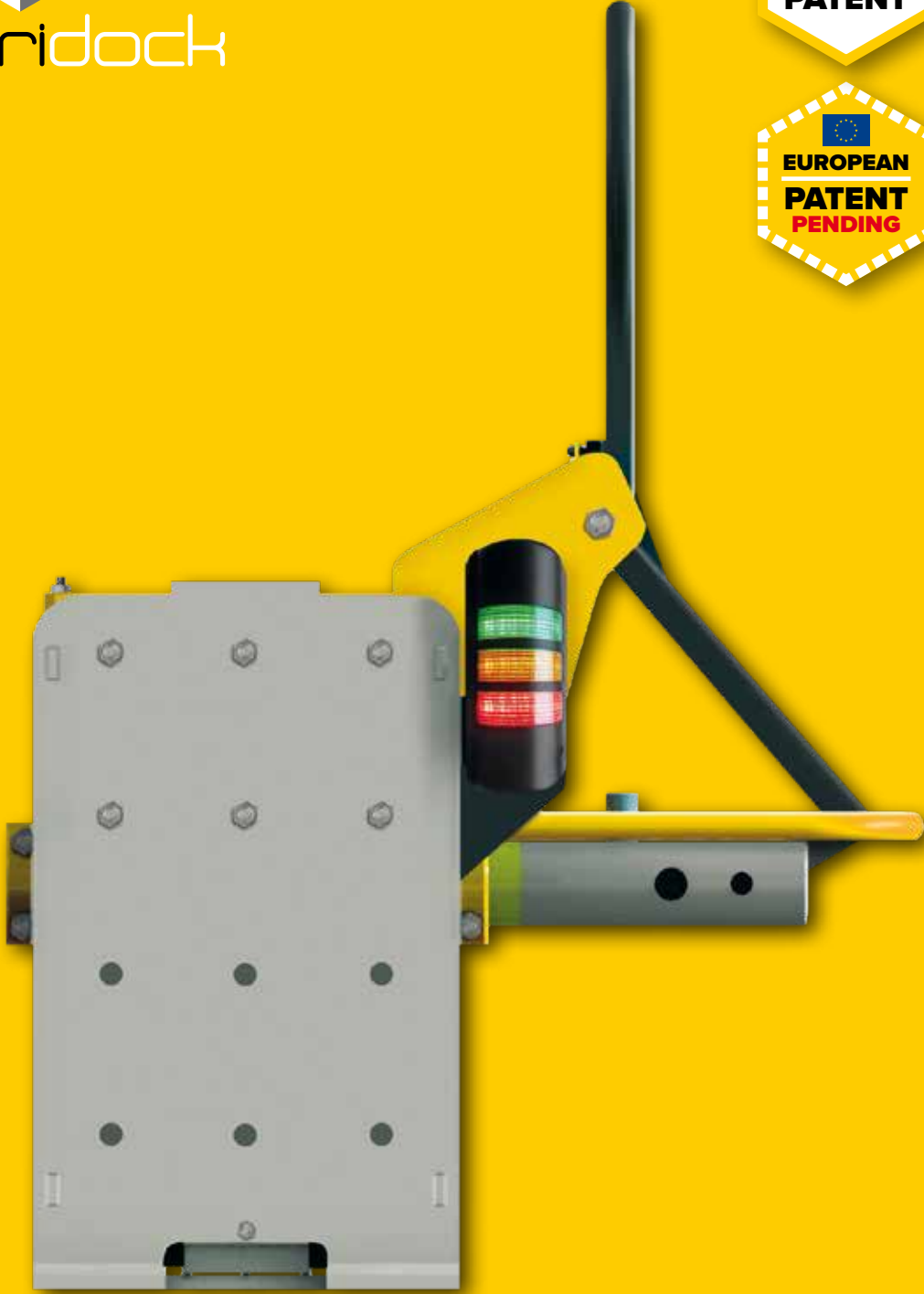




Securidock



SÉCURI-LOCK





SÉCURI-LOCK is the new generation of our trailer locks. It secures and protects operators against unintentional lorry departures during loading and unloading operations.

In terms of the number and seriousness of accidents at work, the goods transport sector is second only to the construction and public works sector, and is one of the sectors where risk prevention is particularly important. These accidents most often occur during loading and unloading operations.

An 80 mm-diameter steel arm is positioned in front of one of the trailer's wheels, blocking the road unit in the event of an unplanned departure.

During the loading and unloading phases, this arm is locked in the wheel-lock position and is fully controlled by the loader closing the dock door to unlock it.

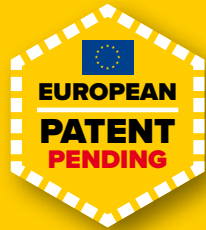


Accidents most often occur during loading and unloading operations.



DESIGN • PRODUCTION • PATENT

- SÉCURI-LOCK IS 100% FRENCH EQUIPMENT. The design, manufacture, assembly and the electrical cabinet are all carried out in Brittany.
- Protected by hot-dip galvanising.
- The trolley is protected by cathoporesis and two-coat powder paint.
- A patent protects the specific features of SÉCURI-LOCK.



SÉCURI- LOCK



Sécuridock



OPERATION

- When the outside light is green and the driver can dock.
- When the interior light is red, and the door and platform are locked and closed.
- The driver puts the lock arm in front of the tyre.
- The lights reverse and the door can be opened.
- The arm is locked and cannot be removed. Door and platform opening.
- Transhipment complete. Door closed.
- Authorisation for the driver to release the lock.
- Green exterior light and red interior light. Locked and controlled door and platform. The driver can leave.



RESISTANCE • SAFETY
RELIABILITY • DESIGN • CONFIDENCE
INTUITIVE PROTECTION TREATMENT
• SIMPLICITY

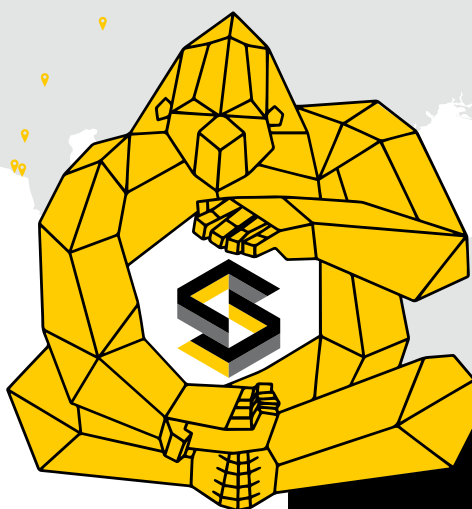




Securidock

LOADING BAY EQUIPMENT & INDUSTRIAL DOORS

SAFETY ON THE DOCKS



Securidock

ZA DE KERHUEL
29290 MILIZAC
FRANCE

Tél. +33 (0)2 98 42 61 53
contact@securidock.com

www.securidock.com



Recommandation
ED-6059 INRS

Design and renovation
of quays for the safe docking,
loading and unloading
of heavy goods vehicles.



SÉCURIDOCK,
winner of the
best innovation
Safety, security
& cyber

at SITL 2021,
with **SÉCURI-LOCK !**

